



PLAYFAIR

M I N I N G L T D .

SEAL LAKE
COPPER-SILVER

www.playfairmining.com

Copper-Silver in Canada

Jan. 11, 2011

Cautionary Disclaimer: Forward-looking Statements

Certain statements contained herein regarding the Company and its operations constitute “forward-looking statements” within the meaning of the United States Private Securities Litigation Reform Act of 1995. All statements that are not historical facts, including without limitation statements regarding future estimates, plans, objectives, assumptions or expectations of future performance, are “forward-looking statements.” We caution you that such “forward looking statements” involve known and unknown risks and uncertainties that could cause actual results and future events to differ materially from those anticipated in such statements. Such risks and uncertainties include fluctuations in precious metal prices, unpredictable results of exploration activities, uncertainties inherent in the estimation of mineral reserves and resources, fluctuations in the costs of goods and services, problems associated with exploration and mining operations, changes in legal, social or political conditions in the jurisdictions where the Company operates, lack of appropriate funding and other risk factors, as discussed in the Company’s filings with Canadian and American Securities regulatory agencies. Resource and production goals and forecasts may be based on data insufficient to support them. The Company expressly disclaims any obligation to update any forward-looking statements.

SEAL LAKE Copper - Silver

- 150km northwest of Happy Valley Goose Bay, NL
- 16,825 Hectares - 100% interest via staking
- Sediment hosted Kupferschiefer-type mineralization known to host many world-class Copper deposits
- 33km by 4.4km mineralized canoe-shaped sedimentary basin zone
- Immense Bulk Tonnage target potential at Seal Lake underground and/or open pit
- Closely analogous to 688 million tonne White Pine deposit (Michigan USA).



www.playfairmining.com

World Class Kupferschiefer Deposits



Silver
\$28/oz



Copper
\$4.00/lb

USGS OF 03-107 & Corporate Websites

World Class Kupferschiefer Deposits

Deposit	Mt (millions)	Copper %	Silver gpt	Country
Lubin	2,600.0	2.0	30.0	Poland
White Pine	688.0	1.2	40.0	United States
Presque Isle	90.7	1.3	5.0	United States
Mansfeld	75.0	2.9	150.0	Germany
Ghanzi (Hana Mining)	93.2	1.5	17.5	Botswana
Boseto (Discovery Metals)	60.4	1.4	19.5	Botswana
Juaramento	59.2	0.8	19.2	Argentina
Richelsdorf	42.0	1.0	25.0	Germany
Redstone	37.0	3.9	11.3	Canada
Boleo	18.7	3.4	9.0	Mexico
Klein Aub	18.0	2.0	45.0	Namibia

SEAL LAKE Copper - Silver

- Orma Lake access road 80 km west and Churchill Falls Hydro dam 180 km southwest
- Abundant water sources for exploration and 'run of river' power.
- 33km x 4.4km mineralized sedimentary basin
- ~136 copper and copper-silver occurrences including 16 copper-silver showings and 9 copper silver prospects
- 1950's, 1970's and early 1990's exploration by various majors yields exceptional data base
- Airborne & ground geophysics, property-wide mapping, trenching, DHH.
- **Numerous drill ready targets.**



SEAL LAKE Copper - Silver

Historical Exploration Assets

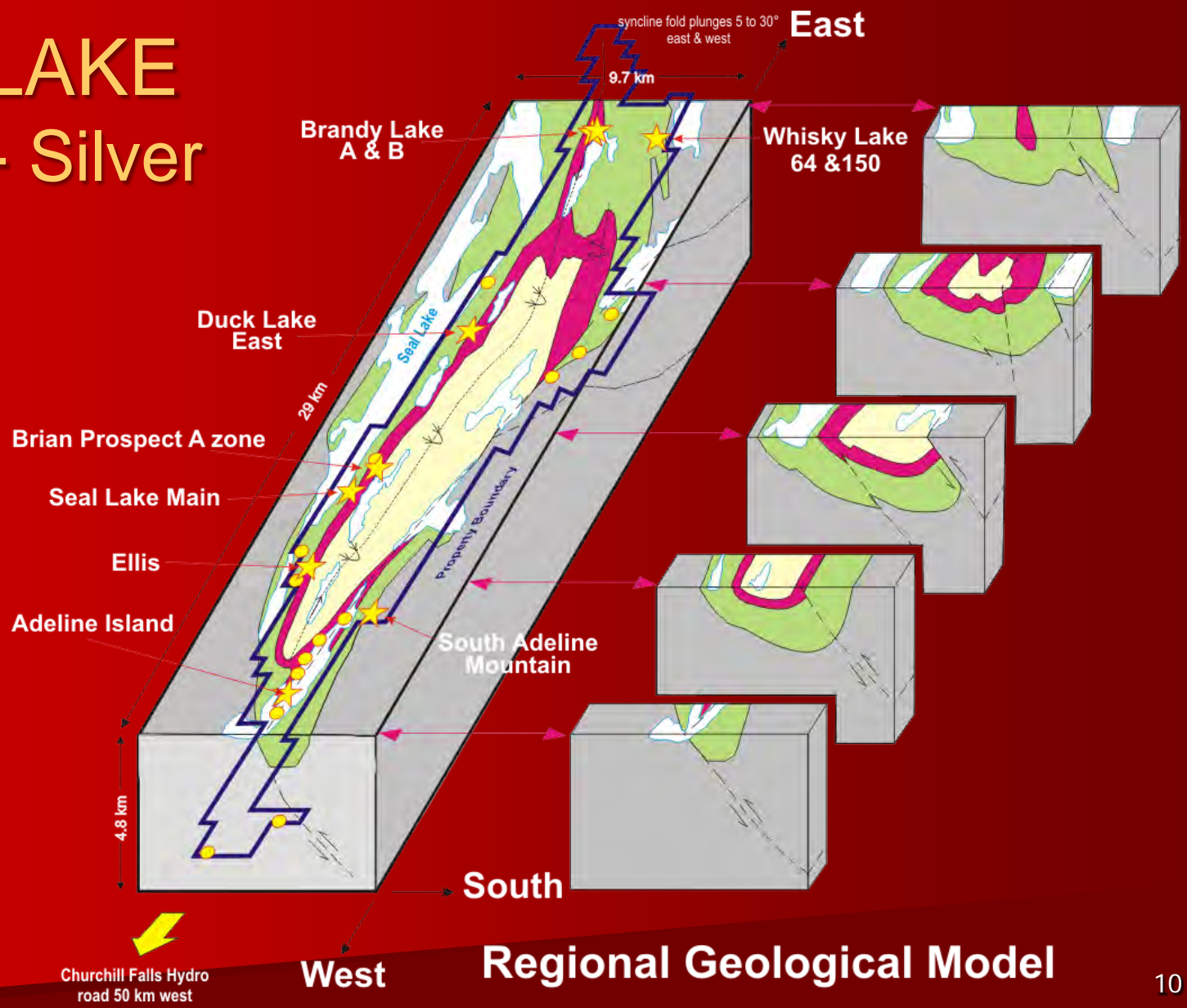
Type	Estimated 2010 \$	Complete
1992 Noranda Airborne Geophysics Dighem EM, Magnetics, VLF: 1627kms @ 250m lines	325,000	✓
2000 Silver Spruce Airborne Geophysics Magnetics- Radiometrics: 3435 km @ 200m lines	240,000	✓
Various Ground Geophysics (1956, 1972, 1992) IP, Mag, VLF, Self Pot.	280,000	✓
Various detailed Mapping, trenching, soils, lake sediment, prospecting, line cutting	3,700,000	✓
~ 1956 Kennco drilling: 26 holes, 2,300 metres	600,000	✓
1972 Brinex drilling: 15 holes, 1,200 metres	300,000	✓
	\$5.45 Million	

SEAL LAKE Copper - Silver

Seal Lake Historical Channel or DDH Highlights				
		metres	Cu %	Ag gpt
Whiskey Lake 150	Chip	11.0	2.9	45.9
Ellis	Chip	9.8	1.4	43.9
Ellis	DDH	11.3	1.0	30.4
	incl.	4.3	1.7	51.8
Adeline Island	Chip	6.4	2.5	?
Adeline Island	Chip	5.3	2.1	?
Adeline Island	DDH	2.4	2.5	11.0
Adeline Island	DDH	1.6	4.7	42.2

SEAL LAKE Copper - Silver

www.playfairmining.com



SEAL LAKE Copper – Silver

Exploration Plan – Winter 2011

- Compiled historical data basin wide
- Traced reduced shales between Adeline Island and Ellis (6km) using historical geology, geochemistry and geophysics
- Drill program to test basin wide continuity of mineralization
- Two areas 25 km apart to be drill tested with drill holes 1 km apart.
- Estimated budget \$1.5 million; includes estimate 4,000m diamond drilling in 20 to 25 holes.

SEAL LAKE Copper – Silver

Financing Completed

Estimated budget \$1.5 million

Includes estimate 4,000m diamond drilling

Completed a \$2.5 million flow through non-brokered financing.

PLY 1 Year



PERFECT TIMING



- **Current global politics & economics = strong metal prices**
- **Increasing raw material demand via BRIC countries → replacing developed nations as global material consumers.**

Playfair's extensive Seal Lake Copper-Silver Zones drill ready

Management

Donald G. Moore - Chairman & CEO

D. Neil Briggs - Director

James Robertson, P. Eng. - Director

Jeff Lightfoot - Director

PLAYFAIR MINING LTD.

Suite 520 - 470 Granville Street
Vancouver, BC
Canada V6C 1V5

Share Structure

Trading Symbol, TSX Venture:	PLY
Trading Symbol, Frankfurt:	P1J
Trading Symbol, OTC:	PLYFF
Shares Outstanding:	109,627,361
Fully Diluted:	116,512,361
Warrants:	None

Telephone 604.687.7178
Toll Free: 888.244.6644

info@playfairmining.com
www.playfairmining.com